



Metis Experience



Come Play in a Place with a Past! ...Where History is Fun!



Over 200 years ago the North West and Hudson's Bay companies set up rival posts at the end of the fur trade line on the North Saskatchewan River. Competition for trade was fierce. During 76 years of operation, nine different Aboriginal groups came here to trade. Explorer, fur trader and mapmaker, David Thompson used Rocky Mountain House as a base for finding a pass across the Rocky Mountains

- Interpretive presentations
- Visitor Centre with exhibits, videos and gift store
- Picnic in a tipi
- Bison herd
- 1/2 size model Playfort
- 7 km of nature trails

Dates: mid- May to early-September
Mail: Rocky Mountain House National Historic Site of Canada Site 127, Comp.6, R.R. #4 Rocky Mountain House, AB T2T 2A4 CANADA
Phone: (403) 845-2412
Fax: (403) 845-5320
Web: www.parksCanada.gc.ca/rocky

Rocky Mountain House National Historic Site of Canada

Arts and Heritage Foundation of St. Albert

A dynamic organization, the Arts and Heritage Foundation promotes the visual arts and the natural and human heritage of the area. It manages Profiles Public Art Gallery, Musée Héritage Museum and St. Albert Heritage Sites, offering exciting programs, exhibitions and research as well as ensuring the preservation of our historic buildings and significant artifacts.

Musée Héritage Museum

Nestled inside St. Albert Place, the Musée Héritage Museum explores the story of St. Albert through a variety of programs, preserving the community's history for the future.

St. Albert Heritage Sites

Dedicated to preserving the architectural heritage in St. Albert, Heritage Sites manages the Little White School, St. Albert Grain Elevator Park, and River Lot #24 - Métis Interpretive Centre, an original river lot and Métis homestead.

Museum: Mon. to Sat. 10 am - 5 pm
 Sun. 1 pm - 5 pm
 Closed Statutory Holidays and Sundays in July and August

For more information about activities and events please contact:

Phone: (780) 459-1528
Fax: (780) 459-1546
Email: museum@compusmart.ab.ca
Web: www.compusmart.ab.ca/museum

River Lot #24, Métis Heritage Interpretive Centre: presently being restored

For more information about activities, events and restoration projects please contact

Phone: (780) 459-1194
Fax: (780) 459-1232

Fort Edmonton Park



It's Living History at its Best!

Join the costumed historical interpreters and try your hand at living as an early pioneer. You'll step into the fur trade during 1846 at the Hudson's Bay Fort, a frontier town on 1885 street, a brand new city on 1905 street, and you'll catch a glimpse of Edmonton's twenties on 1920 street.

There are activities for all ages - antique vehicle rides; pioneer children's games; learning to bead; playing pool and horseshoes; taking aim at the shooting gallery; and even 1920's style miniature golf. Take time to visit one of the many food service outlets and period retail shops. All you can ride steam train and streetcar rides are included in the admission.

Open: Daily - Victoria Day to Labour Day
Location: Fox Drive and Whitemud Drive, Edmonton, Alberta
Admission is charged
For information about activities and events at the site please contact:
Phone: (780) 496-8787
Web: www.edmonton.ca/fort/

Ewan Moberly Homestead



The Ewan Moberly Homestead in Jasper National Park is one of a number of Métis dwellings which were located in the upper Athabasca river valley 100 years ago. The buildings at this site represent the skill and ingenuity of the Métis settlers who lived in the area before roads and railways were built.

The site contains a number of historic features which include a dwelling of square dovetailed log construction and a grave site. The buildings have been partially restored and stabilized by Jasper National Park, family descendants and the Métis Nation of Alberta, who are working together to find ways to tell the story of early Métis settlement in the area.

The site serves to increase appreciation and awareness of Métis history and as a focal point to highlight several Métis families and locations in the region. Enhanced interpretation will encourage park visitor use and enjoyment of the site.

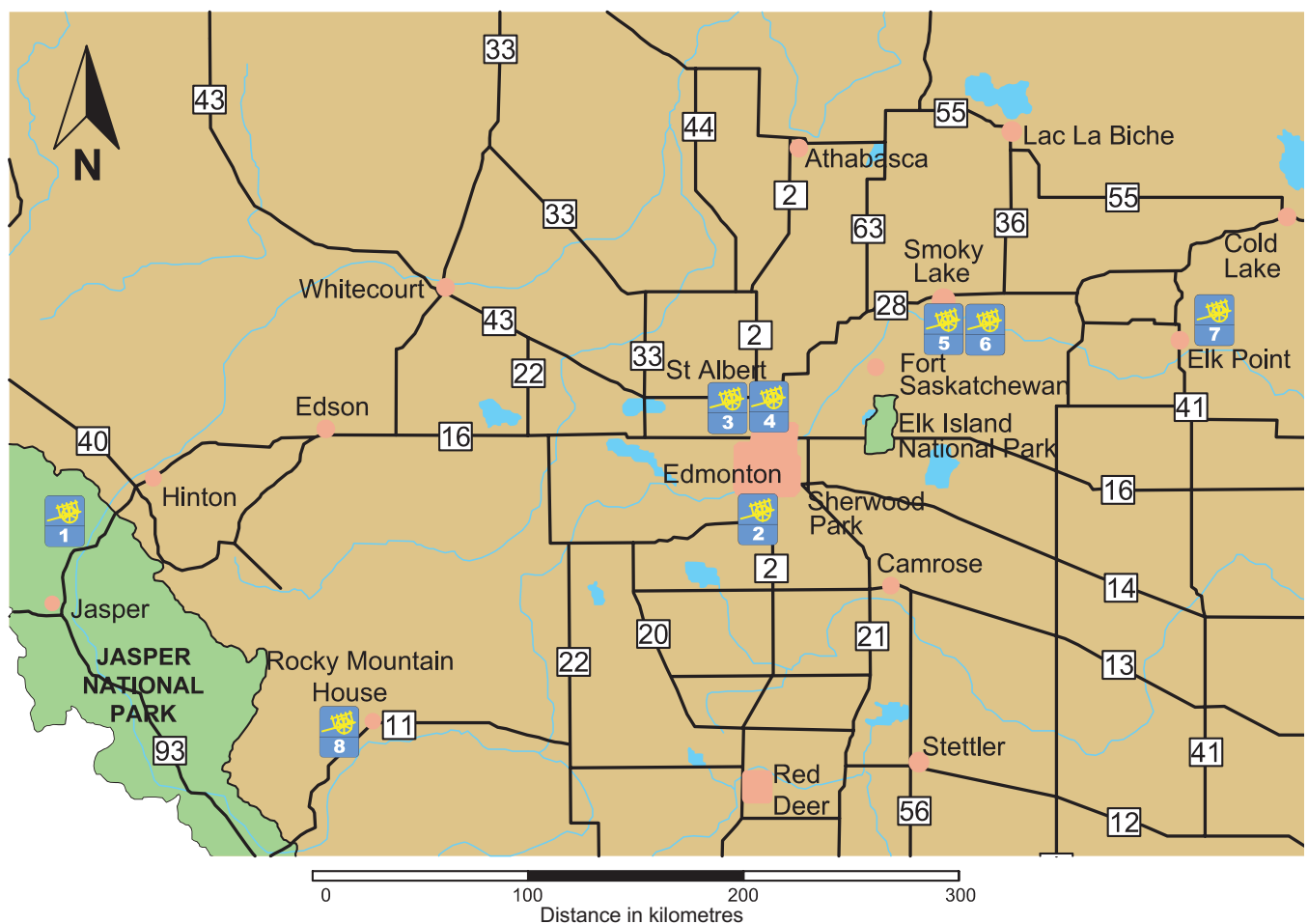
Location: Follow Highway 16, 8 km east of Jasper to Snaring Campground turn-off. At the road junction turn off, follow the secondary road 12 km to the Moberly Homestead site.

Admission: National Park pass

Visit the Jasper-Yellowhead Museum and Archives in Jasper to learn more about Métis peoples and Jasper area history. Located at 400 Pyramid Lake Road (across from the Activity Centre in Jasper).
Open: Summer: Daily 10 am - 9 pm,
 Winter: Thurs - Sun 10 am - 5 pm
Admission charged.
Contact us at (780) 852 3013 or jymachin@telus.net



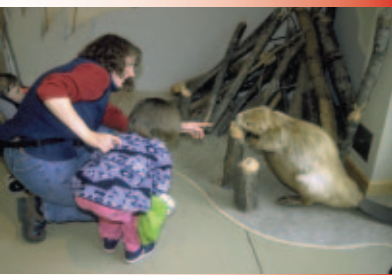
Alberta



- 1 Ewan Moberly Homestead Jasper National Park of Canada
- 2 Fort Edmonton Park
- 3 Arts & Heritage Foundation of St. Albert
- 4 Father Lacombe Chapel Provincial Historic Site

- 5 Victoria Landing Provincial Métis Cultural Heritage Interpretive Centre
- 6 Victoria Settlement Provincial Historic Site
- 7 Fort George & Buckingham House Provincial Historic Site
- 8 Rocky Mountain House National Historic Site of Canada

Fort George & Buckingham House



Take a trip through time and visit Fort George & Buckingham House Provincial Historic Site, the location of two competing fur trade posts. Wander through the gallery and let modern technology offer you a glimpse of the dreams of Louis, the voyageur. Listen as William Tomison, the Chief Factor of Buckingham House, reflects and writes in his journal.

Step into the world of the Aboriginal people whose lives were so affected by the arrival of the fur traders. Meet the "Country Wife" and learn about the important role she played as the link between two cultures.

Complete your visit with a stroll down the interpretive path to the archaeological site of the two forts. The view will take your breath away. Guided tours available.

Open: Daily May 15 - Labour Day 10 am - 6 pm
Location: 13 km southeast of Elk Point on Hwy. #646, Alberta
Admission is charged
For information about activities and events at the site please contact:
Phone: Summer (May 15 - Labour Day) (780) 724-2611
 Winter (780) 645-6256
Fax: (780) 645-4760
E-mail: fort.george@gov.ab.ca
Mail: Fort George & Buckingham House Alberta Community Development Historic Sites and Cultural Facilities Branch c/o 8820 - 112 Street Edmonton, Alberta T6G 2P8

Victoria Settlement Historic Site



Discover a quiet place of history on the North Saskatchewan River where the Reverend George McDougall founded a Methodist mission to the Cree in 1862. He named it Victoria in honour of the Queen. In 1864, the Hudson's Bay Company arrived and opened Fort Victoria to trade with the Cree. The 1864 Clerk's Quarters and the 1906 Methodist Church are all that remain of a once bustling English-speaking Métis community that stretched six miles along the river.

Historic interpreters will lead you through sixty years of history, from the arrival of Reverend George McDougall to the immigration of Ukrainian settlers early in the 20th century. Adventurous travellers can follow the original Victoria Trail, built for Red River carts, into bustling modern day Edmonton.

Open: Daily May 15 - Labour Day 10 am - 6 pm
Location: 10 km south of Smoky Lake on Hwy #855, and 6 km east on the Victoria Trail, Alberta
Admission is charged
For information about activities and events at the site please contact:
Phone: Summer (May 15 - Labour Day) (780) 656-2333
 Winter (780) 645-6256
Fax: (780) 645-4760
E-mail: victoria.settlement@gov.ab.ca
Mail: Victoria Settlement Provincial Historic Site Alberta Community Development Historic Sites and Cultural Facilities Branch c/o 8820 - 112 Street Edmonton, Alberta T6G 2P8

Who are the Métis?

The origin of the Métis is rooted in the historical fabric of Canada. In the Canadian Northwest, Métis evolved into a new and distinct Nation. From the 1600's to late 1800's, the mixed-blood offspring of French fur traders from the North West Company or Scottish and English fur traders from the Hudson's Bay Company and Cree, Ojibway or Saulteaux women formed an ever-increasing proportion of the fur trade population.

By the mid-19th century, Métis villages appeared around fur trade posts from the Great Lakes to the Mackenzie Delta. With their mixed traditions and command of both European and Indian languages, the Métis were logical intermediaries in the commercial relationship between two civilizations. They adapted European technology to the wilderness, through innovations such as the Red River Cart and York Boat, making it possible to transport large volumes of goods and supplies to and from the far-flung outposts of the fur trade. As people of mixed ancestry increased in number and married amongst themselves, they developed a new culture, neither European nor Indian, but a fusion of the two and a new identity as Métis. The Métis of the prairies organized the commercial buffalo hunt. Efforts by Scottish settlers to restrict Métis hunting and trading practices eventually led to Battle of Seven Oaks in 1816 where the victorious Métis led by Cuthbert Grant, Jr. first unfurled the flag of the Métis Nation. Wherever the Métis settled, they had their own distinct land holding system where land was divided into long narrow river lots to ensure equal access to the rivers systems so necessary to the Métis' way of life.

The Métis Nation today is entering into a renaissance period as Métis people across Canada, the United States and Europe reclaim their Métis heritage, with pride and determination. This brochure, celebrates the Métis Nation of Alberta and explores its influence through west-central Alberta.

Victoria Landing Provincial Métis Cultural Heritage Interpretive Centre



Opening 2005. Commemorating the contribution of Métis people of Alberta. To be located at the corner of Hwy 855 and Victoria Settlement Trail (11 km South of Smoky Lake).



Contact for information about activities and events:
Métis Nation of Alberta
 #100, 11738 Kingsway Avenue
 Edmonton, AB T5G 0X5
Phone: (780) 455-2200
Fax: (780) 452-8946
Email: info@metisheritage.ca
 or: icollins@metis.org

Website: www.metisheritage.ca

Brochure Partners:

- Jasper National Park of Canada
- City of Edmonton: Fort Edmonton Park
- Arts & Heritage Foundation of St. Albert
- Alberta Community Development (Historic Sites Services)
- Alberta Métis Historical Society
- Métis Nation of Alberta
- La Chambre Économique de l'Alberta

Father Lacombe Chapel



In 1861, Father Albert Lacombe and his Métis helpers constructed a log building to serve the new St. Albert Roman Catholic Mission. This simple chapel, Alberta's oldest building, became the centre of the thriving French-speaking Métis settlement of St. Albert. Today the chapel has been restored to look much as it did in the early 1860s.



Drop into the chapel and let the historical interpreters take you back to an earlier time. Visit the crypt where Father Lacombe and Bishop Grandin are buried. Take a stroll through the cemetery, the resting place of some of St. Albert's first residents. Tours available in English and French.

Open: Daily, May 15 - Labour Day 10 am - 6 pm
Location: on St. Vital Ave. Just off the St. Albert Trail, in St. Albert, Alberta
Admission is charged
For information about activities and events at the site please contact:
Phone: Summer (May 15 - Labour Day) (780) 459-7663
 Winter (780) 431-2300
Fax: (780) 427-0808
E-mail: father.lacombe@gov.ab.ca
Mail: Father Lacombe Chapel Provincial Historic Site Alberta Community Development Historic Sites and Cultural Facilities Branch c/o 8820 - 112 Street Edmonton, Alberta T6G 2P8